

Violin

Donauwellen

(for Piano, Violin, Viola, Cello, Contrabass)

I. Ivanovich
Arr. by Masao Yokoyama

Measures 1-28 of the score. The music is in 2/4 time. It begins with a piano (*p*) dynamic and a crescendo leading to a mezzo-piano (*mp*) dynamic. Measure 15 is marked with a box 'A'. The dynamic reaches fortissimo (*ff*) and another crescendo leads to sforzando (*sf*). Measure 26 is marked 'ad lib.' and 'rall.'. Measure 27 is marked 'Andante' and contains a 7-measure rest. Measure 28 is marked with a box 'B' and contains a 2-measure rest. The dynamic is *p* and the tempo is 'rit.'.

Waltz 1

Measures 29-48 of the score. The music is in 3/4 time. It begins with a mezzo-forte (*mf*) dynamic and a crescendo leading to a mezzo-forte (*mf*) dynamic. Measure 29 is marked with a box 'C'. Measure 37 is marked with a box 'C'. Measure 45 is marked with a box 'C'. Measure 48 is marked with a box 'C'. The dynamic is *f*.

Waltz 2

Measures 49-62 of the score. The music is in 3/4 time. It begins with a piano (*p*) dynamic. Measure 54 is marked with a box 'D'. Measure 62 is marked with a box 'E'. The dynamic is *f*.

177 2. K *f* *tr*

186 *tr* *ff*

194 L *tr*

202 *tr*

206 *tr* *ff*

Finale

211 *ff* *sf* *sf* *sf*

222 M *p* *dim.*

231 *p* *f*

239 N *f*

247 *p* *mf*

255 O *cresc.* *tr*

263 *f* *cresc.* *tr*

270 P *ff*

Viola

Donauwellen

(for Piano, Violin, Viola, Cello, Contrabass)

I. Ivanovich
Arr. by Masao Yokoyama

15 **A** *p* *mp* *cresc.*

26 *ff* *cresc.* *sf* **Andante**

24 *p* **B**

29 *mf* *p* **2** *rit.*

Waltz 1

28 *p* *cresc.* *mf*

37 **C** *f*

45 *f*

49 *f*

Waltz 2

54 *p* **D**

62 *cresc.* *f*

71 **E**

87 **F**

97

f *p* *f* *p* *mf*

cresc. *f*

Waltz 3

105

ff

109 **G**

p cresc. *dim.* *p cresc.*

118

f

127 **H**

p

135

p *cresc.*

140

f

Waltz 4

145

mf

153 **I**

cresc.

161 **J**

mf

168

mf

173

f

179 **K**

187

195 **L**

203

**Finale**

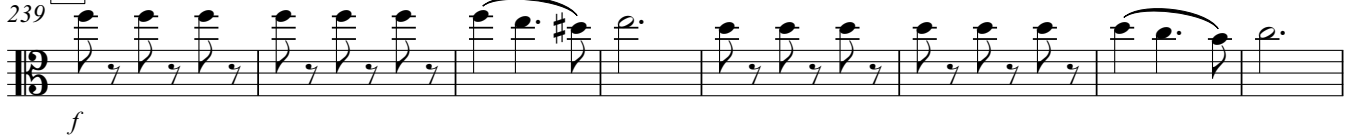
211



222



231

239 **N**

247

255 **O**

263

270 **P**

Violoncello
Donauwellen
(for Piano, Violin, Viola, Cello, Contrabass)

I. Ivanovich
Arr. by Masao Yokoyama

9

17 **A**

Andante
pizz.

25 **B** arco

rit.

Waltz 1

28

37 **C**

46

54 **D** Vln. I

Waltz 2

62

71 **E**

71 **E**
Musical staff with notes and rests.

79 *p*

79 *p*
Musical staff with notes and rests.

87 **F**

87 **F**
Musical staff with notes and rests.

96

f

p

f

p

mf

96 *f p f p mf*
Musical staff with notes and rests.

cresc.

f

101

1.

2.

101 1. 2.
Musical staff with notes and rests.

Waltz 3

105

G

105 **G**
Musical staff with notes and rests.

ff

p

dim.

116

p

f

116 *p f*
Musical staff with notes and rests.

126

H

126 **H**
Musical staff with notes and rests.

134

p

cresc.

140

1.

2.

f

f

140 1. 2. *f f*
Musical staff with notes and rests.

Waltz 4

145

145
Musical staff with notes and rests.

153

I

cresc.

153 **I** *cresc.*
Musical staff with notes and rests.

161

J

mp

161 **J** *mp*
Musical staff with notes and rests.

170

mf

cresc.

1.

2.

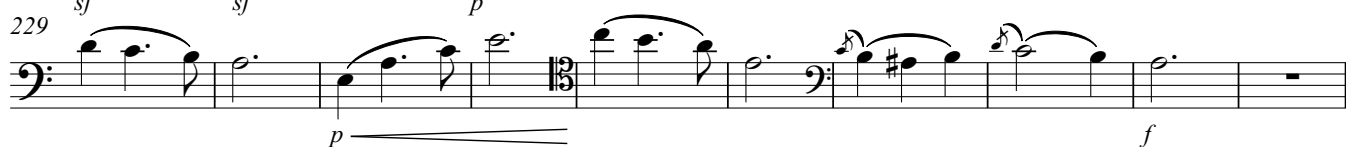
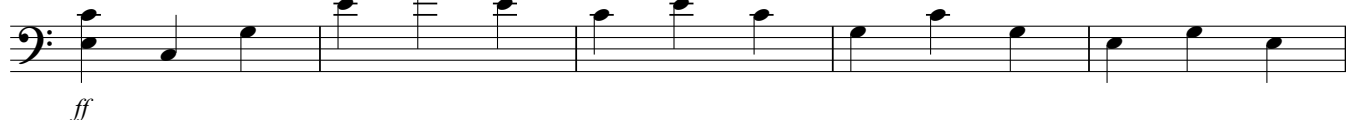
f

mf

170 *mf cresc.* 1. 2. *f mf*
Musical staff with notes and rests.

179 **K**195 **L****Finale**

211

239 **N**255 **O**270 **P**

Contrabass
Donauwellen
(for Piano, Violin, Viola, Cello, Contrabass)

I. Ivanovich
Arr. by Masao Yokoyama

1-8 *p*

9-16 *mp* *cresc.*

17-25 **A** *ff* *cresc.* *sf*

26-23 **Andante** *pizz.* *p*

24-36 **B** *mf* *pizz.* *p* *rit.*

Waltz 1

1-27 *arco* *p* *cresc.* *mf*

28-36 1. 2.

37-45 **C** *f*

46-53 1. 2. *f*

Waltz 2

54-61 *Vln. I* **D** *p*

62-70 *cresc.* *f*

71 **E**

p

79

87 **F**

f p f p mf

96

cresc. f

101

Waltz 3

105

ff **14** **2**

127 **H**

p f

136

cresc. f **1.** **2.**

Waltz 4

145

pizz. mf

153 **I**

cresc. arco

161 **J**

mf cresc.

170

f **1.** **2.**

179 **K**

f

Detailed description: Musical staff for measures 179-186. The staff contains a sequence of eighth and quarter notes. A dynamic marking of *f* is placed below the first measure.

187

ff

Detailed description: Musical staff for measures 187-194. The staff contains a sequence of eighth and quarter notes. A dynamic marking of *ff* is placed below the end of the staff.

195 **L**

Detailed description: Musical staff for measures 195-202. The staff contains a sequence of eighth and quarter notes.

203

ff

Detailed description: Musical staff for measures 203-210. The staff contains a sequence of eighth and quarter notes. A dynamic marking of *ff* is placed below the end of the staff.

Finale

211

ff

Detailed description: Musical staff for measures 211-217. The staff contains a sequence of eighth and quarter notes with accents. A dynamic marking of *ff* is placed below the first measure.

218

sf
sf
sf

Detailed description: Musical staff for measures 218-222. The staff contains a sequence of quarter notes with accents. Dynamic markings of *sf* are placed below measures 218, 221, and 222.

223 **M** **16** **N**

f

Detailed description: Musical staff for measures 223-245. The staff begins with a 16-measure rest, followed by a sequence of quarter notes with accents. A dynamic marking of *f* is placed below the first note after the rest.

246

p

Detailed description: Musical staff for measures 246-254. The staff contains a sequence of quarter notes with accents. A dynamic marking of *p* is placed below the end of the staff.

255 **O**

mf
cresc.

Detailed description: Musical staff for measures 255-262. The staff contains a sequence of eighth and quarter notes. Dynamic markings of *mf* and *cresc.* are placed below the first and end of the staff respectively.

263

f
cresc.

Detailed description: Musical staff for measures 263-269. The staff contains a sequence of eighth and quarter notes. Dynamic markings of *f* and *cresc.* are placed below the first and end of the staff respectively.

270 **P**

ff

Detailed description: Musical staff for measures 270-274. The staff contains a sequence of eighth and quarter notes. A dynamic marking of *ff* is placed below the first measure.

275

Detailed description: Musical staff for measures 275-278. The staff contains a sequence of quarter notes and a final half note with a fermata.